



Welcome to Year 3

Meet the teacher meeting

September 2024

Our School Vision Statement



We are a caring Christian community where everyone adopts an “I can” attitude; everyone feels valued, safe and loved by God. We celebrate our God-given individuality, achievements and talents and we aspire, with God’s help, to become the best that we can be. We believe that each one of us has the ability to achieve our highest potential, living and learning in the fullness of God.

I can do all things through Christ who gives me strength.
Philippians 4v13

Our ACE Expectations – arriving ready to learn.

- ▶ The gate and classroom doors will open at 8:30 each day. Learning starts as soon as the children come in with an opportunity to consolidate learning and complete tasks to prepare for the learning of the day.
- ▶ The gate will close at 8:45 and registers are taken.



Our ACE Expectations – coming to school every day

- ▶ Celebrate good attendance with the children each week in our Friday worship. Classes with best attendance win extra time on the trim trail.
- ▶ Expected attendance is 96% or better.



PENALTY NOTICE FINES FOR SCHOOLS ARE CHANGING



FIRST OFFENCE

1

The first time a Penalty Notice is issued for term time leave or irregular attendance the amount will be:

£160 per parent per child if paid within 28 days
reduced to **£80 per parent per child if paid within 21 days**

SECOND OFFENCE

2

The second time a Penalty Notice is issued for term time leave or irregular attendance the amount will be:

£160 per parent per child to be paid within 28 days. No reduced rate offered.

**The following changes
will come into force for
Penalty Notice Fines
issued after 19th August
2024**

THIRD OFFENCE AND ANY FURTHER OFFENCES (WITHIN 3 YEARS)

3

The third time an offence is committed for term time leave or irregular attendance a Penalty Notice will not be issued and the case will be presented straight to the Magistrates Court. Magistrates fines can be up to £2500 per parent, per child. Cases found guilty in Magistrates Court can show on a parents future DBS certificate, due to failure to safeguard a child's education

10 SESSIONS (5 DAYS) OF UNAUTHORISED ABSENCE IN A 10 WEEK PERIOD

Penalty Notice Fines will be considered when there has been 10 sessions of unauthorised absence in a 10 week period.

Please follow the link for the publication that will start from 19th August 2024.

https://assets.publishing.service.gov.uk/media/65f1b048133c22b8eecd38f7/Working_together_to_improve_school_attendance_applies_from_19_August_2024_.pdf

Attendance reminders

- ▶ **If your child is unwell and unable to come to school, please contact the school on each day of absence.**
- ▶ **If your child's attendance falls below 95% we will make contact with you to discuss ways to work together to improve attendance.**
- ▶ **Please make sure that the office have up to date contact details for you.**

Our ACE Expectations – looking super smart!

Ashford CE Primary School Uniform

- Black trousers, short or long.
- Black pinafore dress or skirt.
- Black or grey socks.
- Blue V-neck sweatshirt or sweat cardigan **which must have the school logo.**
- White Polo Shirts (which preferably have the school logo) for R to Year 2
- Year 3—Year 6 School tie and white shirt, short or long sleeved, in the Winter terms (October until Easter).
- Polo shirts which can have school logo may be worn between Easter and October half term only.
- Blue and white checked or striped dresses may be worn between Easter and October half term.



Where can you buy uniform:

- Logo items from School Days (subject to change)
- Primark
- Matalan
- Tesco
- Tu (Sainsbury)
- Asda George

- Our school uniform can be bought from School Bells who are contactable on:
 - Tel: 01784 557046 ; or online at:
www.schoolbellsuniforms.co.uk/

*****Pre-loved uniform sales are held at regular intervals by the PTA *****

Meet the team

Miss Charlton - Lemurs



**Mrs Edwards -Meerkats
Tuesday-Friday**



**Mrs Naudi - Meerkats
Monday**



Mrs Singh



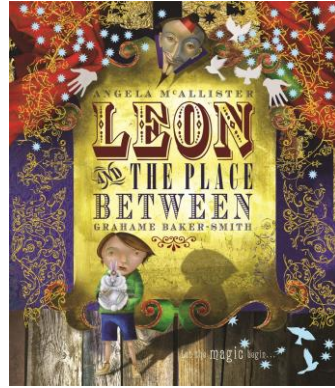
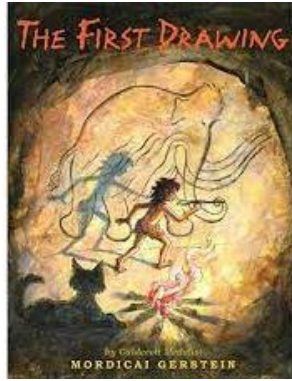
Ms Dean



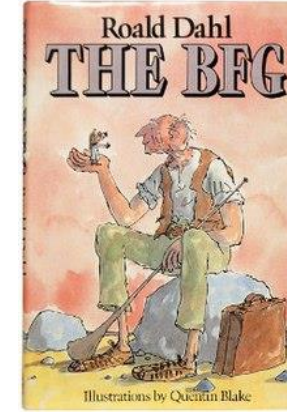
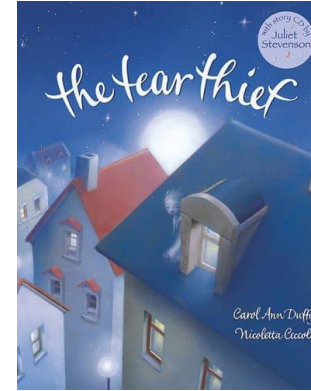
English

- ▶ We will be studying the following books during our English work this year:

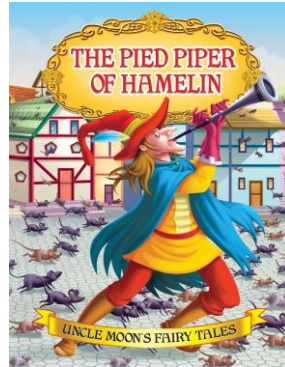
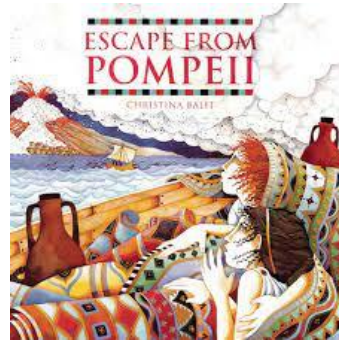
Autumn 1



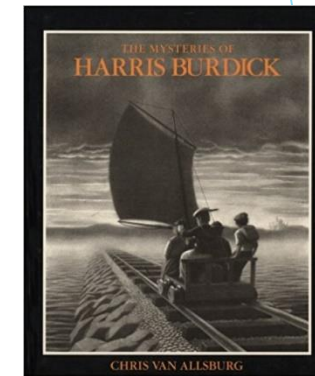
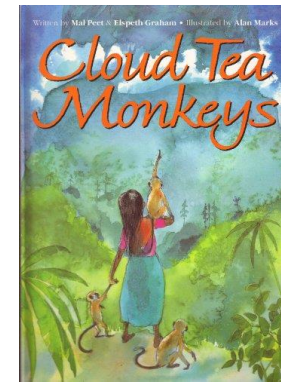
Autumn 2



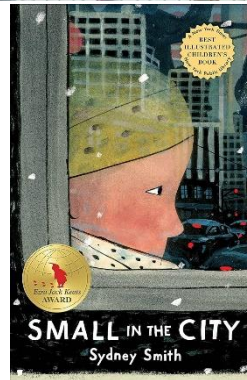
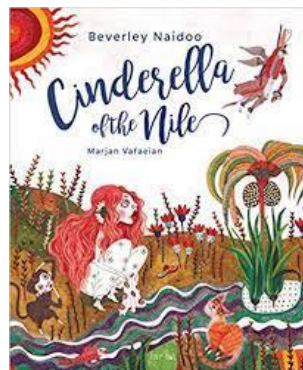
Spring 1



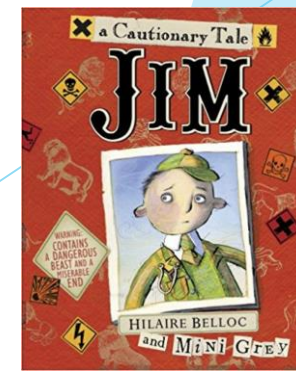
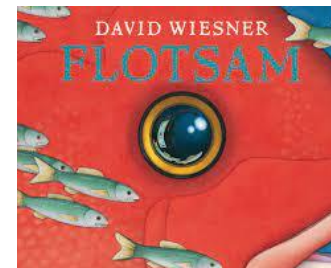
Spring 2



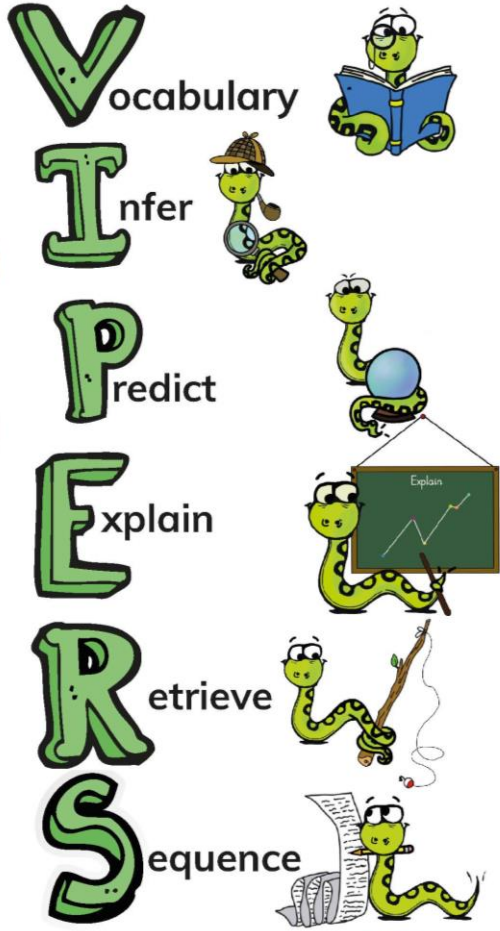
Summer 1



Summer 2



Reading



We teach whole class reading three times a week.

We use a key text to teach the skills needed for reading comprehension.

Reading is a vital skill that is required to access learning in all areas of the curriculum. You can support your child at home by encouraging them to read their home reading book at least 5 times a week.



Spelling Shed

Spellings are introduced and taught to the children in class every Monday.

All children have their own log in so they can access this learning at home.

You can support your child with their spelling by helping them to regularly log on to spelling shed.



Maths

- ▶ We follow the National Curriculum to plan our Maths teaching.
- ▶ We follow the White Rose mastery scheme to ensure progression across the school, with catch-up materials built in to support children and target any gaps in learning.
- ▶ Maths lessons are taught daily.
- ▶ Other opportunities for maths across the school day are planned for including, morning maths, timetables sessions and regular revision sessions.
- ▶ Number facts and timetables are the key to success in other areas of Maths so it is extremely important to practice these regularly.



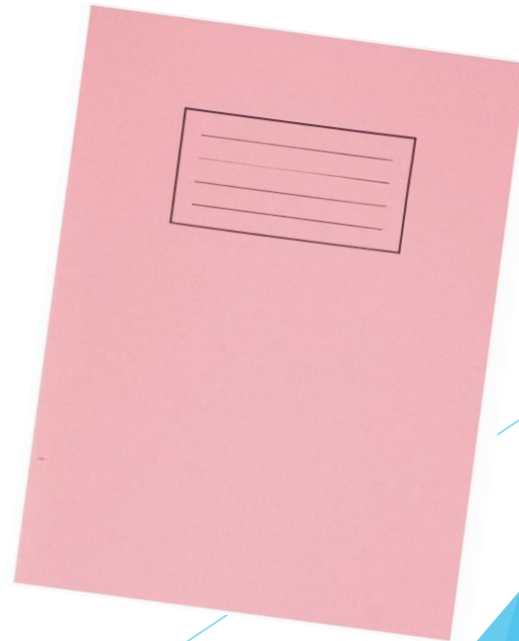
Maths

long term plan

	Week 1	Week 2	Week 3	Week 4	Week 5	Week 6	Week 7	Week 8	Week 9	Week 10	Week 11	Week 12
Autumn	Place Value Retrieval Practice of place value from year two.			Addition and Subtraction Explicitly link to retrieve previous learning of money and measures from year two.				Length and Perimeter Explicitly link to retrieve previous learning of addition and subtraction.			Consolidate	
Spring	Multiplication and Division Explicitly link to retrieve previous learning of money, measures and length and perimeter.						Mass and Capacity Explicitly link to retrieve previous learning of addition and subtraction/multiplication and division.			Money Explicitly link to retrieve previous learning of four operations.		
Summer	Fractions Explicitly link to retrieve previous learning of division with a focus on denominator and divisor.				Time Explicitly link to retrieve previous learning of fractions.		Shape Explicitly link to retrieve previous learning of fractions focusing on fractions of shapes.		Statistics Explicitly link to retrieve previous learning of four operations- using scales.		Consolidate	

Home learning

- ▶ Projects will be set week 2 (pre learning task) - handed in week 4.
- ▶ Summary learning task set in week 5 returned after half term



TT Rockstars

All children should have a login to TTRockstars.

This will be set to revise all timestables. Children should login at least 3 times a week, they should play 2 garage and one sound check game per week.

At the end of each half term the children's heat map will be sent home along with a 'The timestables I need to practice card'.

Please use these to practice the timestables you child needs support with. There will also be extra revision activities on a regular bases.



TT Rockstars

	10	2	5	3	4	8	6	7	9	11	12
10	10 x 10	10 x 2	10 x 5	10 x 3	10 x 4	10 x 8	10 x 6	10 x 7	10 x 9	10 x 11	10 x 12
2	2 x 10	2 x 2	2 x 5	2 x 3	2 x 4	2 x 8	2 x 6	2 x 7	2 x 9	2 x 11	2 x 12
5	5 x 10	5 x 2	5 x 5	5 x 3	5 x 4	5 x 8	5 x 6	5 x 7	5 x 9	5 x 11	5 x 12
3	3 x 10	3 x 2	3 x 5	3 x 3	3 x 4	3 x 8	3 x 6	3 x 7	3 x 9	3 x 11	3 x 12
4	4 x 10	4 x 2	4 x 5	4 x 3	4 x 4	4 x 8	4 x 6	4 x 7	4 x 9	4 x 11	4 x 12
8	8 x 10	8 x 2	8 x 5	8 x 3	8 x 4	8 x 8	8 x 6	8 x 7	8 x 9	8 x 11	8 x 12
6	6 x 10	6 x 2	6 x 5	6 x 3	6 x 4	6 x 8	6 x 6	6 x 7	6 x 9	6 x 11	6 x 12
7	7 x 10	7 x 2	7 x 5	7 x 3	7 x 4	7 x 8	7 x 6	7 x 7	7 x 9	7 x 11	7 x 12
9	9 x 10	9 x 2	9 x 5	9 x 3	9 x 4	9 x 8	9 x 6	9 x 7	9 x 9	9 x 11	9 x 12
11	11 x 10	11 x 2	11 x 5	11 x 3	11 x 4	11 x 8	11 x 6	11 x 7	11 x 9	11 x 11	11 x 12
12	12 x 10	12 x 2	12 x 5	12 x 3	12 x 4	12 x 8	12 x 6	12 x 7	12 x 9	12 x 11	12 x 12

	10	2	5	3	4	8	6	7	9	11	12
10	10 x 10	10 x 2	10 x 5	10 x 3	10 x 4	10 x 8	10 x 6	10 x 7	10 x 9	10 x 11	10 x 12
2	2 x 10	2 x 2	2 x 5	2 x 3	2 x 4	2 x 8	2 x 6	2 x 7	2 x 9	2 x 11	2 x 12
5	5 x 10	5 x 2	5 x 5	5 x 3	5 x 4	5 x 8	5 x 6	5 x 7	5 x 9	5 x 11	5 x 12
3	3 x 10	3 x 2	3 x 5	3 x 3	3 x 4	3 x 8	3 x 6	3 x 7	3 x 9	3 x 11	3 x 12
4	4 x 10	4 x 2	4 x 5	4 x 3	4 x 4	4 x 8	4 x 6	4 x 7	4 x 9	4 x 11	4 x 12
8	8 x 10	8 x 2	8 x 5	8 x 3	8 x 4	8 x 8	8 x 6	8 x 7	8 x 9	8 x 11	8 x 12
6	6 x 10	6 x 2	6 x 5	6 x 3	6 x 4	6 x 8	6 x 6	6 x 7	6 x 9	6 x 11	6 x 12
7	7 x 10	7 x 2	7 x 5	7 x 3	7 x 4	7 x 8	7 x 6	7 x 7	7 x 9	7 x 11	7 x 12
9	9 x 10	9 x 2	9 x 5	9 x 3	9 x 4	9 x 8	9 x 6	9 x 7	9 x 9	9 x 11	9 x 12
11	11 x 10	11 x 2	11 x 5	11 x 3	11 x 4	11 x 8	11 x 6	11 x 7	11 x 9	11 x 11	11 x 12
12	12 x 10	12 x 2	12 x 5	12 x 3	12 x 4	12 x 8	12 x 6	12 x 7	12 x 9	12 x 11	12 x 12



Trips and visits

- ▶ We hope to go to Butser Farm in the summer term as part of our History topic on Romans.
- ▶ We will be having swimming lesson in the spring term and will let you know more information about this nearer the time.
- ▶ Curriculum maps will come home at the beginning of each half term to share with you what the children will be learning.



Ashford Church of England Primary School

Year 3

Autumn 2

Maths

In maths we are learning:

- Addition and subtraction
- Length and perimeter.

English

In English, we will be focusing on the book 'The Tear Thief' by Carol Ann Duffy. We will be writing a diary entry, persuasive poster and learning to use figurative language with the final outcome of a Newspaper Article. Then we will be focusing on 'The BFG' by Roald Dahl. We will be writing recounts, character descriptions, wanted posters, instructions and letters.

This half-term we are reading:

RE

In RE we are learning about the season of Advent and the feast of the Epiphany and how this points towards the true meaning of Christmas.

Science

We are learning about forces and magnets. We will be investigating how magnets work and what materials are.

History/ Geography

In Geography we are learning about Mountains. We will be finding out their features and researching the Himalayas.

Art/ DT

We will be designing and making a Christmas cushion.

Music

We will be learning how to play djembe drums.

Computing

We will explore the concept of sequencing in programming through Scratch.

PE

We will be developing our ball skills and Gymnastics.

RE

RE
LDBS

What is the Bible's Big Story?

Christmas: How does the season of Advent and the feast of Epiphany point towards the true meaning of Christmas?

Judaism - What does it mean to be Jewish

Easter: Who is the most important person in the Easter story?

Buddhism - What did the Buddha teach his followers about life?

Who is Jesus?

Wider curriculum

Science

Rocks

Forces and magnets

Animals including humans (bones)

Animals including humans (food)

Plants

Light



Wider curriculum

History and Geography

Stone Age to Iron Age

Mountains

Romans

Where does our food come from?

Egyptians

Seaside

Wider curriculum – Art, DT and Music

Art	Painting - Pre- Historic		Craft and Design - Egyptian Scrolls		Drawing - Botanical Drawing	
DT		Textiles - Cushions		Mechani sms - Pneuma tic Toys		Food - Seasonal Cooking

Wider curriculum – Computing and French

Computing

Computing systems and networks

Creating media
Stop frame animation

Programming A-
sequencing sound

Data and information -
Branching databases

Creating media-
desktop publishing

Programming b - events and actions in programs





Autumn 1	I am learning French
Autumn 2	Animals
Spring 1	Instruments
Spring 2	I am able
Summer 1	Ice creams
Summer 2	Fruits

PE

- ▶ Our PE days are Monday and Wednesday and children are to come to school in their PE kit.

Ashford CE Primary School

PE Kit



- White T-Shirt (School logo or plain)
- Black Shorts
- Black Joggers
- Black Zip Hoodie
- Black Plimsolls (indoor)
- Plain Trainers (optional for outdoor PE)

All items must be plain with no logos except the White T-shirt which can have the school logo.

Where can you buy PE uniform:

- Logo T-shirt from School Days.
- House Colour T-Shirt for Sports Day via the PTA form on school website.
- Plain PE items can be purchased from:
 - Primark
 - Matalan
 - Tesco
 - Tu (Sainsbury's)
 - Asda George

Average price for a T-Shirt is £2
Joggers £5
Hoodie £8
Shorts £2.50

Open Afternoons

A wonderful opportunity to share your child's learning each term.

- ▶ **Autumn term** – Junior 17th December 2:30-3:30, Infant 16th December 2:30-3:30
- ▶ **Spring term** - Infant 1st April 2:30-3:30, Junior 3rd April 2:30-3:30
- ▶ **Summer term** – Infant 15th July 2:30 -3:30, Junior 16th July 2:30- 3:30

- ▶ **Parent Consultation meetings** – Thursday 24th October from 2pm
Thursday 27th February from 2pm



Working in partnership

- ▶ If you have any questions please see your child's class teacher in the first instance.
- ▶ Teachers can be contacted via the school office or by e mail: info@ashford-primary.surrey.sch.uk

